



PTO School Community Night

January 10, 2023

Welcome!

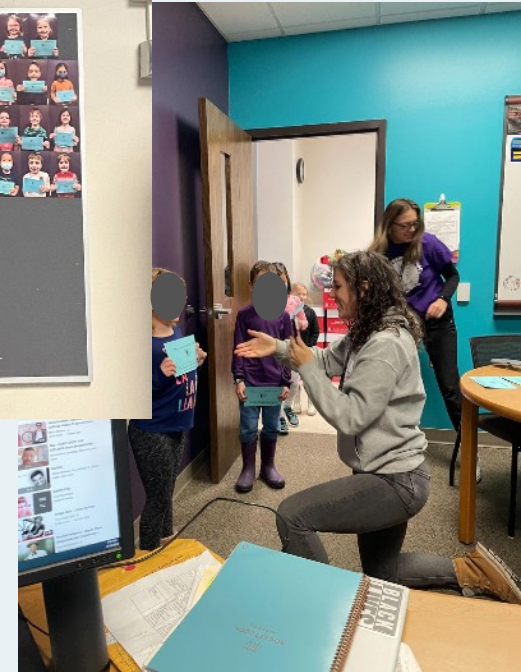


Franklin Highlights



251 pounds & \$150 collected
for Second Harvest!

Fabulous Falcon awards!



Franklin Highlights

Staff appreciation Hot Cocoa Bar!



Gymnastics unit



LIVE

NEWS

11/28/22



BREAKING NEWS

BREA

Randall Highlights








RANDALL



JANUARY



Social Emotional
Learning
January 10, 2022



Agenda

- Introductions
- Social Emotional Learning
- Community Building Circle

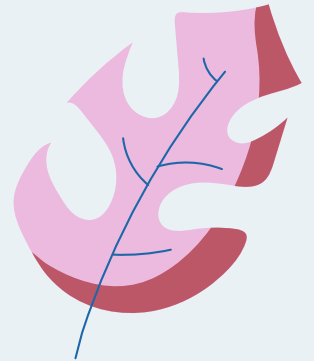
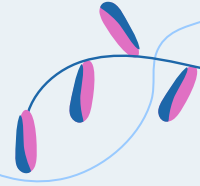
Transformational SEL in MMSD

*The process where children and adults acquire and apply the skills necessary to build and maintain **authentic relationships**. **Centered on student identities and youth voice**, social emotional learning engages learners in strengthening their academic and social emotional skill development to **cultivate their innate abilities** to: understand and process their own emotions, set goals, feel and show empathy for others and critically examine root causes of inequity, to promote **racial and social justice**.*

Social Emotional Learning (SELS)

At Franklin and Randall, this looks like:

- Morning Meetings and Closing Circles
- Inclusive books and lessons
- Proactive Restorative Justice practices
- Restorative Justice and healthy conflict resolution
- Child Protection Unit (CPU) lessons
- Zones of Regulation
- Bounce Back
- Black Girl Magic Groups
- Friendship Groups
- GSA
- Safety Patrol
- Welcoming Schools
- SEL classroom lessons





Community Building Circle

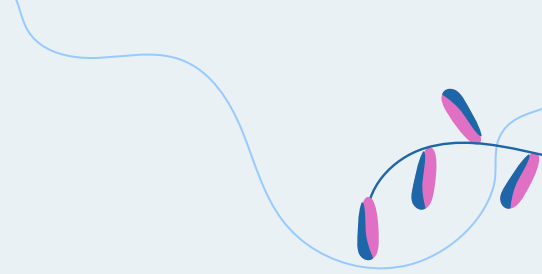
Circle Values & Guidelines

Values -
Something that is important to you, and that helps you communicate openly around important and challenging issues

Guidelines - Using our values to drive how we interact with each other

- Rounds
- Talking Piece
- Confidentiality
- Equal Voice
- Lean Sharing
- Right to Pass





“You are only free when you realize you belong no place—you belong every place—no place at all. The price is high. The reward is great.”

- Maya Angelou





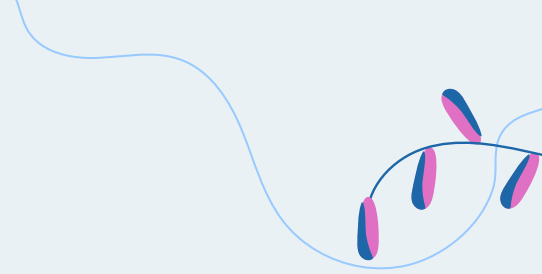
Rounds

Opening – Share your name, pronouns, and a wish for your child in their education.

Round – When was a time you felt like you belonged? What impact did that have on you?

Round – Share a piece of advice that you'd give to yourself as a child in school.

Closing – Share a take away from this presentation



“Relationships are all there is. Everything in the universe only exists because it is in relationship to everything else. Nothing exists in isolation. We have to stop pretending we are individuals that can go it alone.”
- Margaret Wheatley

