

# Franklin Elementary School

## Kindergarten Orientation



work  
HARD

Be  
KiND

WELCOME

Meet the Teachers!



# Meet Ms. Angela!

- I grew up in Milwaukee, WI
- This will be my 12th year teaching kindergarten
- I am married to Alex we have a toddler named Louin and another baby boy on the way
- We have two cats named Prinkles and Chandler
- I love
  - Traveling to new places
  - Listening to and playing music
  - Being outside
  - Cooking and eating yummy food
  - Ice cream



# Meet Ms. Becca!

- I am from Fitchburg, WI
- This will be my 6th year teaching!
- I have three older brothers, a mom dad and a dog named Nike. This summer I am getting married!
- I went to UW Madison
- I love
  - Boating on the lake
  - Traveling
  - Being outside
  - The terrace!
  - Spending time with friends
  - Cooking



# Meet Mrs. Loheide!

- I grew up in Iowa and graduated from the University of Northern Iowa
- I have taught in 4 states (IA, IN, CA, and WI)
- I have been a teacher for 24 years
- I am married to Steve and we have two kids, Quincy (16) and Sequoia (15)
- I love
  - My dog, Sal
  - Traveling to new places
  - Getting out of my comfort zone
  - Reading
  - Being with my family
  - Being with friends
  - Being near water



# Meet Ms. Rachel!

- I am from Franklin, WI
- This is my 7th year teaching
- I was previously Franklin's Instructional Coach before returning to kindergarten (because I miss them!)
- I love
  - Kayaking and paddleboarding
  - The Badgers
  - The terrace!
  - Ice cream
  - Playing Volleyball



# Meet Ms. Powers! – Our Principal

- I grew up in Dubuque, IA.
- This will be my 2nd year at Franklin!
- I went to college at the University of Northern Iowa and at the UW-Madison.
- Here are some things I love:
  - Learning new things
  - Listening to music
  - Being outside
  - Watching sports & TV



# Diane Kopan School Secretary



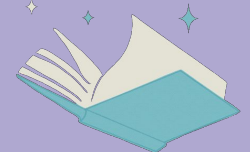
I can answer your questions about...

- Enrollment
- Attendance
- Change in information including
  - Arrival/Dismissal
  - Contact info
  - Address
  - Photo Release
  - Placement notes

[dkopan@madison.k12.wi.us](mailto:dkopan@madison.k12.wi.us)



# SCHEDULE SAMPLE



	Monday	Tuesday - Friday
7:20 - 7:45	Soft Landing + Breakfast	Soft Landing + Breakfast
7:45 - 7:55	Morning Meeting and movement	Morning Meeting and movement
7:55-8:50	Whole Group Literacy	Whole Group Literacy
8:50-9:20	Recess	Recess
9:20-9:30	Snack	Snack
9:30-9:45	Math Lesson	Math Lesson
9:45-10:15	Work Places	Work Places
10:15-10:30	Number Corner	Number Corner
10:30 - 11:00	Lunch Recess	Lunch Recess
11:00-11:20	Lunch	Lunch
11:20-12:20	Foundational Skills	Foundational Skills
12:20-1:20	Specials 12:20-12:50	Specials
1:20-1:40	Dismissal at 1:00	Social Emotional Learning Or Science
1:40-2:20		Free Choice
2:32		Pack up and Dismissal

# KINDERGARTEN CLASSROOM



Rachel

## Details

- We have 4 kindergarten classrooms at Franklin
- Students will have space for whole group learning on the rug, tables, and areas to play
- We will hear more about opportunities to see your child's classroom further in the presentation

# Arrival, Breakfast, and Soft Landing

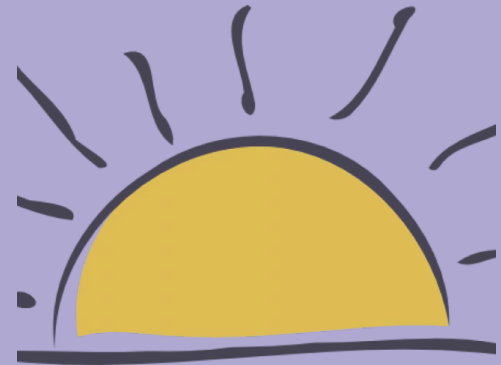
Angela

## Details

- Students enter on Lakeside St.
  - Car arrivals will begin along the playground, staff will help open doors, and parents will remain in cars
  - Bus arrivals get dropped off in front of the building
  - Walkers drop off to designated door
- Students can get a breakfast from school or bring from home
- Students can choose to have breakfast and/or socialize with friends
- All school doors are locked due to security measures; any parents entering the school must go through Door #1 on Lakeside St. and sign in in the office

## Building Independence

- Have a goodbye plan
- Do not elongate goodbyes, even if your child is sad. It is okay to have a challenging goodbye
- Ensure your child knows their breakfast plan - this helps teachers from needing to know all kids plans
- Practice efficient eating and cleaning up



# MORNING MEETING

Message Greeting Share Activity



Angela

This is a time for us to build trust, get to know one another, and develop a sense of belonging and significance in the classroom. Every day we begin our day by greeting each other, sharing about a topic, engaging in an activity or a game and reading our daily message. During this time we practice how to be a friend, listen to others and take turns so that everyone feels included and safe. Most importantly, we have fun!

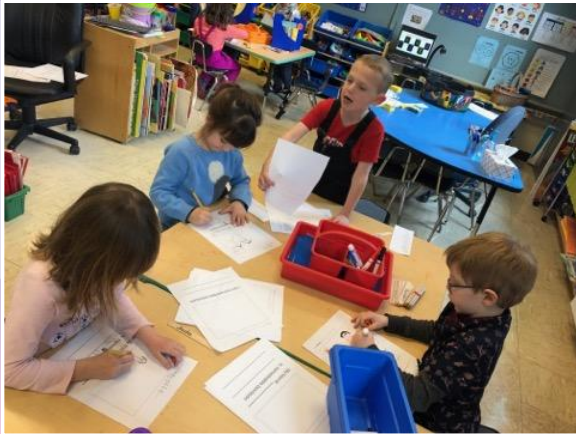
# FOUNDATIONS SKILLS BLOCK

Rachel



Students engage in a variety of work during skills block

- Decodable books
- Writing
- Language development through exploration
- Foundational games
- Teacher-led groups



The pot is big and the lid is shut.

# SNACK

- Students bring a small snack each day - teachers will have extras in the room
- We have hand-washing routines and snack time built into our schedules
- Think about a snack that is simple for your child to transport to school, open, and eat in about 5-10 minutes.
- You will get more information from your classroom teacher about snack routines for your child's class.
- We always have extra snack at school!

*We may have allergy restrictions. Your child's teacher will let you know in the fall*



# MATH

Becca



Learning through lessons, cooperative games, and exploration \*Practice winning and losing with your child\*

Numeral writing and recognition to 20

Shape recognition and reasoning

Counting forwards, backwards, and on from a given number

Addition and Subtraction Problems

# RECESS

Angela

In Kindergarten we have two recess periods per day! This will be a great opportunity for you to volunteer at Franklin. More info coming this Fall.

## Building Independence

- Help your child decide what they should wear outside
- If you hear about recess problems, encourage them to go to an adult in an orange vest in the future to help resolve problems. Often classroom teachers are not supervising on the playground.





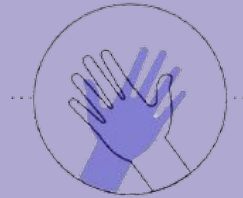
# LUNCH

## Details

- Load money onto your child's account using School Café [www.schoolcafe.com](http://www.schoolcafe.com) **You will need their 6 digit school ID**
- Children choose lunch right away in the morning, and are reminded of their decision at lunch time
- School lunches include milk
- If a child brings a lunch from home, they can buy a milk from school
- There are allergy-friendly options! **Make sure to register your child's allergy in infinite campus**

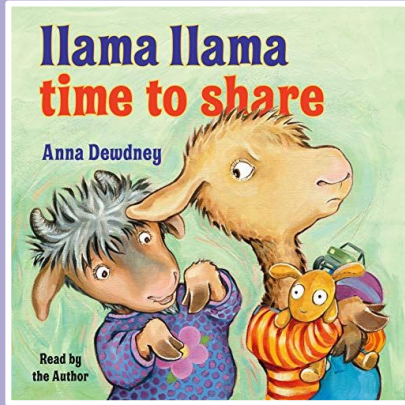
## Building Independence

- Ensure your child knows their lunch plan
- Practice opening, eating, and cleaning up
- *While we encourage eating, it is ultimately your child's responsibility to eat the food they need.*



# LITERACY BLOCK

Beth



In our first module, students will learn and practice behaviors for sharing and caring for classroom toys and interacting with peers

We will discuss norms and behaviors through structured conversations, role play, and guided discovery of toys, and analysis of the text *Llama Llama Time to Share*, *Toys Galore*, *Have Fun*, *Molly Lou Melon*, and *Playing with Friends*

We will...

- Look for character traits, make connections, retell the story, and identify character emotions

We will also learn through

- Singing **songs** about playing together
- Engaging in **conversations** with peers
- **Playing** with toys and practicing how to share, and take care of materials,
- **Writing** and **drawing**



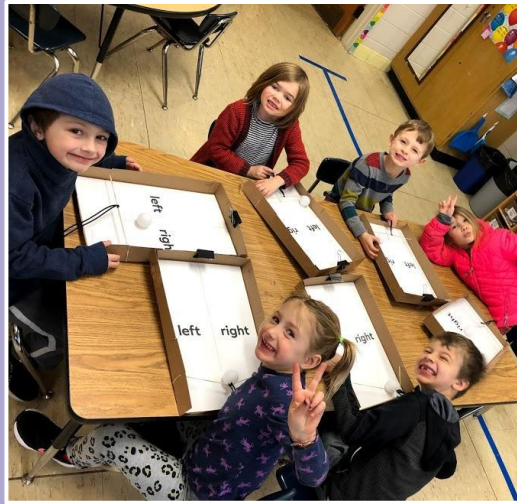
# SCIENCE

Science is integrated in our literacy!

Plants and Animals

Forces and Pulls

Weather



Becca



# Specials

Each week students will have..

**P.E.** 90 minutes

**Art** 60 minutes

**Library/Reach** 60 minutes

**Music** 60 minutes



Beth



# DISMISSAL ROUTINE

## Details

- Early dismissal Monday
- Classroom teachers will work with families to know end of day plans
- 5K students who ride the bus can be dropped off without an adult present
- It is crucial you speak to a person at Franklin if end of day plans change for the same day (do not email/leave voicemail please)
- Walker Pickup is in front of Franklin School
- Cars will park and walk to meet their kids on the playground.

## Building Independence

- Go over bus-riding expectations with your child - similar to when they sit in any vehicle (bottoms on seat, facing forward, inside voice)
- Tell your child their dismissal plan each morning - DO NOT tell your child of a change of plans too far in advance as this often confuses kids



# Other Details!



# ALL GENDER BATHROOMS

Angela

- All bathrooms at Franklin are gender neutral
- Students also have access to single stall bathrooms
- Practice identifying when they need to go, handwashing, flushing, wiping



# LOCKERS AND MATERIALS

Beth



Materials list will be finalized and sent out, as well as [posted on the website](#) by the beginning of summer

As you gather supplies know that many materials will be shared with everyone

Please make sure your child has a big enough backpack for their materials!

**Toys do not come to Franklin School**



# Here are ways to help make your child's kindergarten experience even better!

- 5 year olds need **10 to 13 hours of sleep each night.**
- **Practice responsibility and independence.** You may practice:
  - Opening lunches, eating with utensils
  - Cleaning up spills
  - Shoes, zippers, buttons, snow pants, mittens, and boots
  - Managing their own materials and items
- **Be on time!** Children who are tardy often
  - Struggle to start their day
  - Cause mix-ups with lunch counts
  - Are losing opportunity for social and academic growth
- **Keep toys and valuables at home. Dress your kiddo ready for school and ready for the weather**



# VOLUNTEERS

- In typical school years, Franklin offers many ways for you to volunteer! For example:
  - Sort books
  - At lunch and recess
  - In your child's classroom as the year progresses
  - Field Trips
- MMSD asks for volunteers to get a [background check](#) prior to volunteering through their website. It is an extensive process so you may want to begin now.

The Franklin/Randall PTO supports programs and projects that enhance Franklin and Randall Schools, families and the community.

We fundraise, facilitate teacher appreciation activities, and host community building events like the Glow Ball, movie nights, Parent Empowerment Groups, and PTO school community nights.

- Visit Franklin-Randall PTO website and join email PTO list ([www.franklinrandallpto.org](http://www.franklinrandallpto.org))
- Read the Franklin-Randall Newsletter (sent via email every other Friday)
- Join the Friends of Franklin/Randall Elementary School Facebook page
- Attend quarterly PTO membership meetings to learn about important issues affecting our kids and schools

Sign up to help with PTO sponsored school events: Glow Ball, Science Day, Winter Carnival...



## K PLAYDATES!

The PTO is hosting kindergarten playdates at Franklin!

- **Tues., August 15, 5:30-7:00p\***
- **Sat., August 19, 10:00-11:00a**
- **Weds., August 23, 10:30a-12:00p\***
- **Sun., August 27, 3:00-4:00p**

\*During the starred times, students and families can get a tour of Franklin school!



# AFTER SCHOOL PROGRAMS

Angela

Wisconsin Youth Company (Franklin Gym)

Neighborhood House

Zoo School

Monroe Street Arts Center

Black Belt America

University Avenue Discovery Center

# SAFETY at FRANKLIN SCHOOL

Emily

## Orange Vests

**Visitor Sign In/Name Tags--** Always check in at the office (Door 1)

**Drills-** Evacuation (fire), Shelter (tornado), Hold, Lock Down

## Important Numbers to Save!

Main Office: 204-2292

Attendance: 204-2294

Health Office: 204-2313

# What's Next?!

Emily

## WHEN WILL I FIND OUT WHO MY CHILD'S TEACHER IS?

We will send an email to families on **Friday, August 25th** sharing information about *initial* class placements and other back to school information. This data allows for adjustments to be made due to enrollment changes, staffing changes and aligns with Randall's class placement.

## WHEN CAN I SEE THE SCHOOL?

We will host a 'Franklin Fly In' on **Tuesday August 29th** where your kindergartener can come meet staff, see their classroom, and the school!

We will also host an open house in the Fall for families and students and Ready, Set, Goal conferences.

**The first day of school for 4k and Kindergarten is Friday September 1st.**  
***School start times will be finalized soon! Likely between 7:15 and 7:45***

# What's Next?!

Emily

## QUESTIONS?

Keep an eye out for emails from Diane Kopan, our school secretary and Ms. Powers. The Franklin-Randall PTO may send out information on play dates as well. We will have opportunities to meet the teacher before school in August.

## Stay Connected!

Follow us on any or all of the platforms below!

- [Facebook Page](#)
- [Youtube Page](#)
- [Friends of Franklin/Randall Facebook Page](#)



# CONTACT LIST

Angela

**Angela** [ajdominguez2@madison.k12.wi.us](mailto:ajdominguez2@madison.k12.wi.us)

**Becca** [rjohnson9@madison.k12.wi.us](mailto:rjohnson9@madison.k12.wi.us)

**Beth** [baloheide@madison.k12.wi.us](mailto:baloheide@madison.k12.wi.us)

**Rachel** [rjpelletier@madison.k12.wi.us](mailto:rjpelletier@madison.k12.wi.us)

**Emily** [eapowers@madison.k12.wi.us](mailto:eapowers@madison.k12.wi.us)

**Diane** [dkopan@madison.k12.wi.us](mailto:dkopan@madison.k12.wi.us)





THANK YOU!

We can't wait to meet and  
welcome your future falcons!

# Franklin Elementary School

## Kindergarten Family Orientation



### Incoming Kindergarten Families

Our Kindergarten team will have an informational meeting on May 15th in the Franklin Library for caregivers. The meeting will run from 5-6pm. You can choose to attend this meeting in-person at Franklin, or by logging in by Zoom. If you are able to attend the in-person meeting at Franklin, we will have childcare available during the presentation. Again, this event is geared towards adult learning about the upcoming school year and an opportunity to meet Franklin staff.